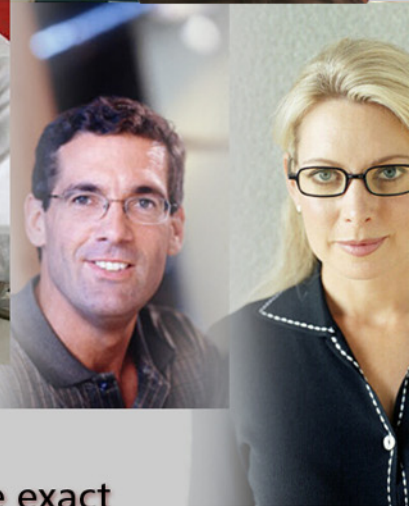
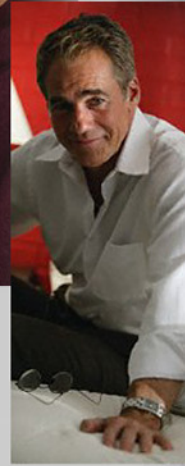
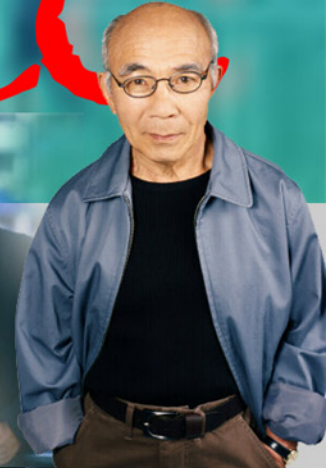


Second in the *Seeds of Civilization* series

RJ Archer

Tsubute



The Maya of Mexico's Yucatan Peninsula could predict the exact time of a solar eclipse 500 years before the "advanced" thinkers of Europe realized the earth isn't actually flat.

Across the globe, a monument submerged off the coast of one of Japan's southernmost islands could have been liberated from its bedrock by human hands more than 9,000 years ago.

Off the coast of Cuba, megalithic structures—possibly dating back 15,000 years—lie 2,200 feet beneath the surface.

Scientists insist earth's first civilizations emerged in Mesopotamia and elsewhere as recently as 5,000 years ago.

Could they be wrong?

The characters in *Tsubute* suggest that much earlier civilizations may have been influenced by visitors from another world.

Could they be right?